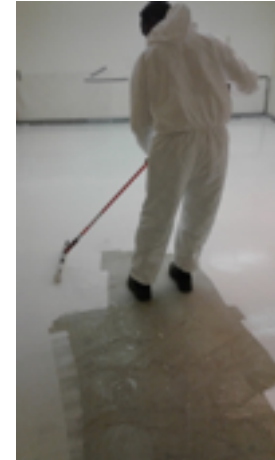


Plextone Liquid Chip Application Guide



- 1. Prepare Surface - Patch and Diamond abrade or shot blast surface using 50-75 grit. Prime with Plextone water-based primer 4-5 mils wet film by roller, measured with wet film thickness gage. Let dry 2-3 hours and then apply Plextone to tacky primer using strap on spiked sandals to avoid footprints.
- 2. Mix Liquid Chips by boxing or hand stirring and pour into pressure tank.



- 3. Use S-770 spray gun (3.5 mm orifice size) and set air pressure regulator to 40-50 psi and fluid pressure 15 psi to start.

Seagrave Coatings, 209 N. Michigan Ave., Kenilworth, NJ 07033, 201-933-1000
www.seagravecoatings.com, www.plextonemulticolor.com



- 4. Spray a piece of scrap cardboard to achieve pattern of standard by adjusting fluid pressure and air pressure before applying to floor.
- 5. Apply by holding gun 12-18 inches from floor at right angle and achieve coverage by lapping strokes by 50%. For even results, use Cross-Hatch technique of doing horizontal passes and then respraying at 90 degree angle. Apply approximately 5 mils wet which is 300 square feet per gallon.



- 6. Apply 100% solids epoxy clear coat after 5 hours when Plextone should be dry and can walk on it. Apply using roller to 5 mils - 10 mils depending on desired look using roller. Let dry overnight. It should be OK for light traffic but requires 72 hours for full cure. Do not apply if temperature is below 60 degree F.

